



## 14 Sinderhill Court, Northowram, Halifax, HX3 7WB

£100,000

- Spacious one-bedroom apartment
- Large double bedroom with space for additional furniture
- Generous lounge and living area
- Popular Arboretum development in Northowram
- Allocated parking space

# 14 Sinderhill Court, Halifax HX3 7WB

Situated within the popular Arboretum development in the heart of Northowram, this well-presented one-bedroom apartment offers spacious accommodation, allocated parking, and excellent access to local amenities. Ideal for first-time buyers, downsizers, or investors, the property combines practical living space with a highly convenient location.



Council Tax Band: A



### Entrance Hall

A welcoming entrance hall provides access to all principal rooms and creates a bright first impression of the property.

### Lounge

The spacious lounge offers excellent living and dining space, with ample room for a range of seating and storage furniture, making it ideal for both relaxing and entertaining.

### Kitchen

The fitted kitchen features an L-shaped worktop and includes a washer dryer, oven, gas hob, and freestanding fridge freezer. A useful utility cupboard provides additional storage space.

### Bedroom

The generously sized double bedroom comfortably accommodates a king-sized bed and benefits from ample space for freestanding wardrobes, drawers, and additional furniture.

### Bathroom

The bathroom comprises a bath with shower over, wash basin, and WC, providing a practical and well-maintained suite.

### Outside

The property benefits from an allocated parking space and is situated within the attractive Arboretum development, offering a pleasant residential setting.

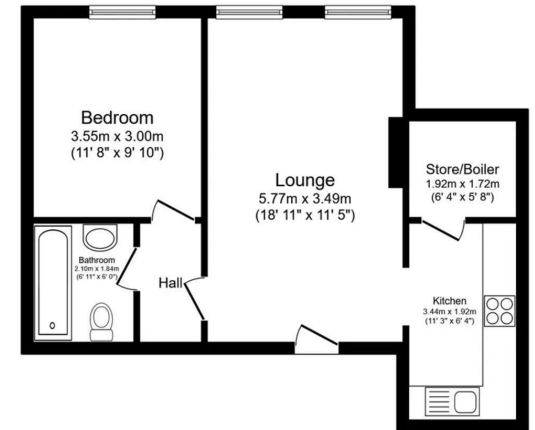
### **Agent Notes & Disclaimer**

The information provided on this property does not constitute or form part of an offer or contract, nor maybe it be regarded as representation. All interested parties must verify accuracy and your solicitor must verify tenure/lease information, fixtures & fittings and, where the property has been

extended/converted, planning/building regulation consents. All dimensions are approximate and quoted for guidance only as are floor plans which are not to scale, and their accuracy cannot be confirmed. Reference to appliances and/or services does not imply that they are necessarily in working order or fit for the purpose.







Total floor area 48.6 m<sup>2</sup> (523 sq.ft.) approx  
 This floor plan is for illustrative purposes only. It is not drawn to scale. Any measurements, floor areas (including any total floor area), openings and orientation are approximate. No details are guaranteed, they cannot be relied upon for any purpose and they do not form part of any agreement. No liability is taken for any error, omission or misstatement. A party must rely upon its own inspection(s). Powered by [www.propertybox.io](http://www.propertybox.io)

